

EBED

EMERGENCY BED SYSTEM



Proudly made in the USA

E-BED

EMERGENCY BED SYSTEM

Alliance Manufacturing Group is committed to equipping the medical community with the finest emergency preparedness equipment for use by hospitals, medical examiners, alternate care facilities, and disaster medical assistance teams. Our E-BED System is the medical professional's complete solution to mobile patient care needs.



Every product in our E-BED System is designed with durability, ease of use and comfort in mind . . .

THE E-BED SYSTEM IS IDEAL FOR:

PUBLIC HEALTH DEPARTMENTS • HOSPITALS
CORONERS • SURGE CAPACITY PREPAREDNESS
DISASTER PREPAREDNESS • FIRE DEPARTMENTS
POLICE DEPARTMENTS • MILITARY • ALTERNATE
CARE TREATMENT FACILITIES • BARIATRICS

E-BED PLATFORM FEATURES

- The E-BED base platform easily converts to multiple products for a wide range of uses
- The E-BED base platform may be purchased alone, or along with a conversion kit for additional functionality
- Medical grade stainless steel won't rust, corrode, or oxidize
- All surfaces are easily decontaminated and disinfected for years of repeat use
- Products are lightweight, easy to transport and simple to assemble and disassemble
- Full-swivel removable casters with locking brakes
- CPR Compatible
- Molded patient support surface provides maximum patient comfort
- All components compliant with the Buy America Act and manufactured in the USA



The E-Bed base component can easily be converted to any of these products for diversity of use, efficient storage, and easy transport.



Ebed



Epediatric



Erack



Eworkstation

Ebed

Full Alternate Care & Surge Capacity Treatment Bed E-Bed-500-26-32



Proudly made in the USA



Push-button assembly in 120 seconds, without the use of tools



Made of easy-to-clean materials for quick decontamination



Collapses to 3" height for easy storage and transportation



Durable construction provides support for weight up to 750 lbs.*

*With bariatric bars

FEATURES:

- ADA compliant
- Weight capacity of 750 lbs*
- Adjustable backrest for increased use
- Washable anti-microbial mattress
- Mattress can be disinfected and decontaminated for re-use
- Assembles in 120 seconds w/o tools

*With bariatric bars

DIMENSIONS:

- Height: 19-23" (w/o casters)
- Available in heights: 26"-34" (with casters)
- Patient bed surface: 81" x 31"
- Convoluted pressure reduction foam mattress
- Collapses to 3" height
- Storage footprint: 81" x 31" x 3"

"In the world of disaster response, the best solutions are simple, adaptable, and reliable. E-Bed meets all three requirements. The design team anticipated a wide range of needs and came up with options that make sense. Their equipment can be easily stored, rapidly deployed, and it is rugged enough to withstand the rigors of improvisational field medicine. I am impressed."

INCLUDED ACCESSORIES: E-Cot, 2" mattress with anti-slip pad, backrest, adjustable backrest mounts, removable side rails, single-hook IV pole, set of four 8" leg extensions, set of four 5" locking casters (see pages 7 and 8 for optional accessories)

-Dan Diamond, MD
Director, Medical Triage Unit
The New Orleans Convention Center
www.dandiamondmd.com

Ecot

Cot Only
E-Cot-500-19



SPECIFICATIONS

DIMENSIONS:

- Height: 19"
- Length: 81"
- Width 31"

FEATURES:

- ADA and FEMA Compliant
- Weight capacity of 750 lbs.*
- Anti-tipping design
- Fire-retardant stainless steel frame
- Latex-free
- Free of sharp and dangerous components
- Mattress and frame have a one-year warranty
- Mattress complies with CFR 1633 of the fire code

**With bariatric bars*

ADAcot Full

ADA Cot full
E-ADA-Cot-Full-500-19



Comes complete with 2" mattress, anti-slip pad, backrest, adjustable backrest mounts, removable side rails, and single-hook IV pole (see pages 7 and 8 for optional accessories)

SPECIFICATIONS

DIMENSIONS:

- Height: 19"
- Length: 81"
- Width 31"
- Convoluted pressure reduction foam mattress: 2"

FEATURES:

- ADA and FEMA compliant
- Weight capacity of 500 lbs.
- Anti-tipping design
- Fire-retardant stainless steel frame
- Latex-free
- Free of sharp and dangerous components
- Mattress and frame have a one-year warranty
- Mattress complies with CFR 1633 of the fire code

ADAcot

ADA Cot Only
E-ADA-Cot-500-19



SPECIFICATIONS

DIMENSIONS:

- Height: 19"
- Length: 81"
- Width 31"

FEATURES:

- ADA and FEMA compliant
- Weight capacity of 500 lbs.
- Anti-tipping design
- Fire-retardant stainless steel frame
- Latex-free
- Free of sharp and dangerous components
- Mattress and frame have a one-year warranty
- Mattress complies with CFR 1633 of the fire code

Epediatric

Infant Bed
E-Pediatric Bed-500-1



Patented ABS decking for easy decontamination. Pictured with included set of four 5" casters and optional four hook IV pole (See pages 7 and 8 for optional accessories)



SPECIFICATIONS

DIMENSIONS:

- Height: 19-23" (without casters)
- Available in heights: 26-34" (with casters)
- Patient bed surface: 81" x 31"
- Convoluted pressure reduction foam mattress: 2"

FEATURES:

- Converts from our standard E-Bed platform
- Mattress is made of anti-microbial, washable fabric
- Mattress can be disinfected and decontaminated for reuse
- Plexi-glass enclosure for infant safety
- Lightweight, easy to transport and store
- Simple assembly and disassembly

Erack

Mass Casualty Rack
E-Rack-500-19-3



Quick and easy stack-ability with E-Rack Screws.



SPECIFICATIONS

DIMENSIONS:

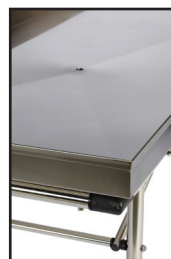
- Height: 59-65" (without casters)
- Adjustable Height: 64-70" (with casters)
- Length: 81"
- Width 31"

FEATURES:

- Converts from our standard E-Bed platform with optional conversion kit
- 3-tier body rack made of molded ABS plastic
- Weight capacity of up to 1000 lbs
- Can be decontaminated for reuse
- Stores flat
- Easy assembly
- Set of 4 locking casters included

Eautopsy

Autopsy Table
E-Autopsy-500-1-SS



Comes with set of four 5" casters (See pages 7 and 8 for optional accessories)



Powder-coated black finish pictured above

SPECIFICATIONS

DIMENSIONS:

- Height: 19-23" (without casters)
- Available in heights: 26-34" (with casters)
- Bed surface: 81" x 33"

FEATURES:

- Connects to standard E-Bed platform
- Stores flat as frame can be stored inside tray
- Drain connection
- Frame and tray are 100% medical grade stainless steel
- Can be completely decontaminated/disinfected
- Weight capacity of 500 lbs.
- Available in stainless steel or powder-coated black finish

Eworkstation

Portable Work Station
E-Workstation-500-2



Comes complete with frame, set of four 14" leg extensions, set of four 5" casters, fully powder coated shelving unit, and two E-Shelf screws



SPECIFICATIONS

DIMENSIONS:

- Worktop surface: 81" x 31"
- Height: 27"(without casters)
- Adjustable Height: 32-34" (with casters)

FEATURES:

- Converts from our standard E-Bed platform
- Portable work station with 2 shelves
- Useful for a hospital station or in alternate care facility
- Can be decontaminated
- Medical-grade stainless steel
- Patented ABS support surface is highly durable
- Assembles in 120 seconds, without use of tools
- Lightweight, easy to transport, fold and store
- Weight capacity of 100 lbs.

CS!table

Stainless Steel CSI
E-CSI Table-1-SS



Medical-grade stainless steel shelving unit with 100 lb. weight capacity comes connected to table as pictured above (see full list of optional accessories on pages 7 and 8)



SPECIFICATIONS

DIMENSIONS:

- Length: 60"
- Width 31"
- Height: 30" (at desk height)

FEATURES:

- Portable and easy to transport
- Collapses to fit in the back of an SUV command vehicle
- Stores flat and takes up approximately 3" of space
- Set of four locking casters included
- Weight capacity of up to 600 lbs
- Assembles in 120 seconds, without use of tool
- Available with shelving
- No rusting, oxidizing or corrosion

Ebariatric

Bariatric Chair-Bed
E-Bariatric Chair-Bed-750-1



SPECIFICATIONS

DIMENSIONS:

- Chair Length: 43"
- Chair Width: 33.5"
- Seat Height: 21"
- Backrest Height: 46"

FEATURES:

- Removable chair cushions and side panels for easy decontamination or disinfecting
- Weight capacity of 750 lbs
- Anti-microbial fabric, 4" comfort foam
- Removable arm rests for easy unloading of patients
- Individual controls for footrest and backrest
- Set of 5" swiveling casters with top-locking brakes
- Made in the USA

Ebox

Portable Bed Storage System
E-Box-500-83-3-Full
E-Box-500-83-2-Half



Full box holds up to 10 E-Beds (half box holds up to 5). The boxes have bottom base with casters and seal, plus inserts and lid with seals and latches.

SPECIFICATIONS

DIMENSIONS:

- Length: 83.5"
- Width 34.5"
- Full Box Height: 56"
- Half Box Height: 36"

FEATURES:

- Designed to store your E-Bed system products and any large items you need protected from the environment
- Weight capacity of 1500 lbs.
- Box bottom has steel powder coated surface
- Insert and lid are powder-coated, lightweight aluminum
- Each section has a protective gasket seal
- Full box stores 10 E-Beds / Half box stores 5 E-Beds
- Made in the USA



The E-Bed can be assembled in 120 seconds without the use of tools and collapses to a 3" height for easy storage and transportation



PRODUCT ACCESSORIES (INCLUDED & OPTIONAL)



2" MATTRESS



ANTI-SLIP PAD



BACKREST MOUNTS



SIDE RAILS



SINGLE HOOK IV POLE



FOUR HOOK IV POLE



DINNER TRAY



BARIATRIC BARS



OXYGEN BOTTLE HOLDER



VINYL LEG CAPS



BODYRACK SCREWS



LEG EXTENSIONS



6", 5" (standard), 4" CASTERS (from left to right)

PRODUCT ACCESSORIES (INCLUDED & OPTIONAL)

PRODUCT	INCLUDED ACCESSORIES	OPTIONAL ACCESSORIES
Ebed EBed-500-26-32	E-Cot, set of four 8" leg extensions, single-hook IV pole, removable side rails, set of 4 5" locking casters, anti-slip pad, backrest, adjustable backrest mounts, 2" mattress	4-hook IV pole, bed tray, workstation on wheels conversion kit, mass casualty rack conversion kit, pediatric bed conversion kit, set of four 4" casters, set of four 6" all terrain casters, set of four 10" leg extensions, set of four 14" leg extensions, bariatric bars, OB holder
Ecot E-Cot-500-19	E-Cot, 2" mattress with anti-slip pad, slip-resistance leg caps	Backrest, adjustable backrest mounts, removable side rails, single-hook IV pole, set of four 8" leg extensions, set of four 5" locking casters
ADAcot Full E-ADA-Cot-Full-500-19	ADA-Cot, 2" mattress with anti-slip pad, backrest, adjustable backrest mounts, removable side rails, single-hook IV pole	Four hook IV pole, dinner tray
ADAcot E-ADA-Cot-500-19	ADA-Cot, 2" mattress with anti-slip pad	Backrest, adjustable backrest mounts, removable side rails, single-hook IV pole
Epediatric E-Pediatric-500-Kit	E-Cot, 2" mattress with anti-slip pad, acrylic side enclosure, set of four 8" leg extensions, set of four 5" locking casters	E-Bed, workstation, and mass casualty rack conversion kit, bariatric bars, four hook IV pole, dinner tray, oxygen bottle holder, set of four 10" or 14" leg extensions, set of four 4" or 6" casters
Erack E-Rack-500-19-3	Set of three E-Cots, set of 8 E-Rack screws, set of four 8" leg extensions, set of four 5" locking casters	E-Bed and pediatric conversion kit, bariatric bars, set of four 10" or 14" leg extensions, set of four 4" or 6" casters
Eautopsy E-Autopsy-500-1-SS	E-Frame, stainless steel top, hose connector, set of autopsy table screws, set of four 8" leg extensions, set of four 5" locking casters	Powder-coated shelf unit, powder-coated table top, set of four 4" casters, set of four 6" all-terrain casters
Eworkstation E-Workstation-500-2	E-Cot, fully powder-coated shelving unit, set of two E-Shelf screws, set of four 8" leg extensions, set of four 5" locking casters	E-Bed, pediatric, and mass casualty rack conversion kit, bariatric bars, four hook IV pole, dinner tray, oxygen bottle holder, stainless steel shelf, set of four 10" or 14" leg extensions, set of four 4" or 6" casters
CSlstation E-CSI Table-1-SS	Asset table, stainless steel top, stainless steel shelving unit, set of two E-CSI screws, set of two E-Shelf screws, set of four 14" leg extensions, set of four 5" locking casters	Powder-coated table top, set of four 10" leg extensions, set of four 14" leg extensions, set of four 4" casters, set of four 6" all terrain casters

"Of all the response-ready medical beds/cots we have tested, the EBED is the best built and utilizes the highest of quality materials. The EBED provides a single surface that can be used to rest a patient, transport a patient, and perform procedures on a patient — benefiting both the patient and the caregiver. Easy decontamination and a relatively small storage footprint makes it an obvious choice for disaster response — and its quality materials will endure for many years to come."

—Mike Ottaway, NE US Territorial Manager, Western Shelter

E-BED

EMERGENCY BED SYSTEM



E-BED SYSTEM

**1118 East D Street
Tacoma, WA 98421**

Phone: 253.581.6619

Fax: 253.588.0119

sales@ebedsystem.com

www.ebedsystem.com



Proudly made in the USA